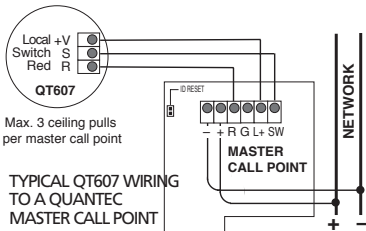


QT607 Quantec Ceiling Pull

Tie the pull cord and its triangular bangles to the ceiling pull as detailed below:--

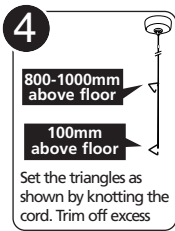
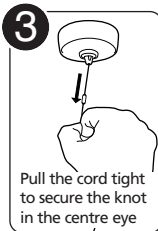
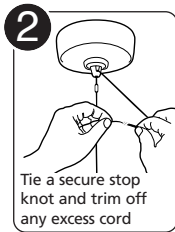


For more detailed wiring information refer to the instructions supplied with the master call point.

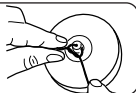
Always assess the condition and construction of the mounting surface prior to installation and fix the QT607 to the ceiling using a suitable screw fixing arrangement.



Keep the cord and bangles clean and tidy by cutting the right hand corner of the bag they are supplied in, threading through 30cm of cord and following steps 1 to 3 on the right. The cord and bangles can now be left dangling from the ceiling pull until the bangles are ready to be fitted and the system commissioned.



If required, you can further secure the pull cord by tying an additional knot around the ceiling pull's centre eye



Ceiling pulls ARE NOT recommended for applications where there is a risk of ligature (e.g. mental health facilities). In such applications we recommend the use of alternative devices such as tamper-resistant call points. Contact your distributor for details.